



Talon[®]

The leading second generation anticoagulant rodenticide with the power to kill all rodents – with just one feed.



introduction



What is TALON®?

TALON® is a versatile rodenticide containing brodifacoum that has proven highly successful throughout the world for more than 20 years. As well as being the world's most effective rodenticide, it is also amongst the most powerful.

As an anticoagulant, TALON reduces the ability of blood to clot. Rodents die by haemorrhaging a few days after consuming a single feed of TALON. The delay ensures that they do not connect the illness with consumption of the bait, so they do not become bait-shy.

A lethal dose of TALON is consumed in a single feed representing just a fraction of a rodent's normal daily food requirement – unlike many other baits which require multiple feeds to be effective. Some strains of rats are resistant to anticoagulants, but TALON is fully effective against all of them.



TALON is available in various formulations to meet the needs of different situations. Not all formulations are available in all countries.

- **TALON Blocks** are very easy to use, simple to secure in place and resistant to the effects of humidity. TALON Blocks are ideal for use in burrow baiting, animal rearing facilities, crop stores and in damp conditions such as sewers.
- **TALON Pellets** are suited to both urban and rural situations and are ideal for use by the food industry and in most domestic, public and commercial premises.
- **TALON Cut Wheat** carefully placed, is extremely successful in protecting farm premises and food storage from rodent damage and contamination. Like those mentioned previously, this formulation is made with top quality grain to ensure that it is highly palatable to rodents.

When to use TALON

TALON bait should be placed into position as soon as signs of rodents are noticed. Delay will allow the problem to become harder to eradicate, thereby adding time and cost to the programme. TALON can also be used preventatively in protected bait stations.

Where to use TALON

The various formulations make TALON suitable for use in homes, factories, farms, food storage facilities, restaurants and hotels. TALON is also suited to public buildings, offices and industrial premises. TALON bait should be placed where rodents run and are active, at feeding points and places where damage occurs. TALON controls rats most effectively when secured in sheltered positions. Familiarity with the bait will encourage the rats to eat.

Unlike many other rodenticides, TALON is also very effective against mice. In contrast to rats, mice are interested in new objects, so it is best to change the positions of the bait stations occasionally.

Care should be taken to prevent access to TALON baits by children and domesticated animals, particularly cats, dogs and pigs. The use of tamper-resistant or tamper-proof bait stations is good practice.

TALON contains the human taste deterrent Bitrex® to help prevent accidental consumption of the bait.

How to use TALON

Brodifacoum, the active ingredient of TALON, will kill rodents after consumption of only a few grammes of bait. However, because it takes effect only after a few days, rodents will continue to eat the bait, if it is available, until they die.

The effectiveness of TALON as a single-feed rodenticide allows the "pulse-baiting" technique to be used with all of the formulations. In this process, small quantities of bait (20-50g or 1-3 blocks) are applied at bait points at weekly intervals. The bait put out at the first application, or "pulse", may be completely consumed by rodents but is not immediately replenished – instead the rodents that took the bait are given time to die. Only when this has happened is more bait put out for the rodents that did not eat at the first pulse. This process is repeated until there are no more signs of rodents. Normally two or three pulses are sufficient.

Using pulsed baiting, less bait is used and rodenticide residues in rodents' bodies are lower, providing an important benefit in non-target safety. The number of bait points required depends on the severity and scope of the rodent infestation. Large numbers of points may be needed with heavy infestations, and effectiveness is greatest with average spacing of two and ten meters between bait points. Bait points should be checked weekly for curative pulsed baiting treatments and every month if baits are put out to prevent infestations from becoming established. Like all other rodenticides, TALON should be applied in tamper-resistant bait stations when there is a risk of consumption of bait by non-target animals.



application & results



Application & results

TALON baits contain 50ppm of the active ingredient brodifacoum. TALON is available in wax block, cut wheat and pellet formulations.

Brodifacoum is widely acknowledged as the most effective toxicant against a wide range of pest rodents and is more effective than any other anticoagulant rodenticide. This is illustrated for commensal rodents in the following tables:

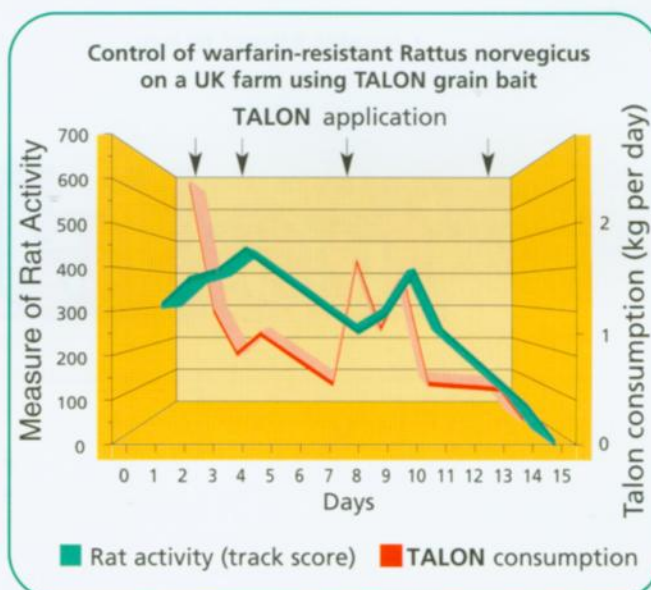
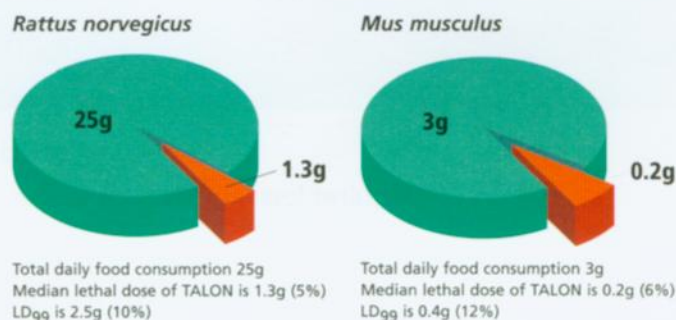
Acute oral LD ₅₀ of various anticoagulants to <i>Rattus norvegicus</i>			
Rodenticide	LD ₅₀ (mg/kg)	Normal bait concentration (% ai)	LD ₅₀ (g of bait / 250g rat)
brodifacoum	0.22 – 0.27	0.005	1.1 – 1.4
bromadiolone	1.1 – 1.8	0.005	5.7 – 9.0
difenacoum	1.8	0.005	5.6
difethialone	0.56	0.0025	5.6
flocoumafen	0.25 – 0.56	0.005	1.25 – 3.64
coumatetralyl	16.5	0.0375	11.0
warfarin	14 – 323	0.025	323

These tables demonstrate that TALON is equally effective against rats and mice.

Acute oral LD ₅₀ of various anticoagulants to <i>Mus musculus</i>			
Rodenticide	LD ₅₀ (mg/kg)	Normal bait concentration (% ai)	LD ₅₀ (g of bait / 25g mouse)
brodifacoum	0.40	0.005	0.2
bromadiolone	1.75	0.005	0.9
difenacoum	0.80	0.005	0.4
difethialone	1.29	0.0025	1.29
flocoumafen	0.79 – 5.31	0.005	0.39 – 2.65
coumatetralyl	> 1000	0.0375	> 66.5
warfarin	374	0.05	18.5

Numerous tests of TALON have been carried out in laboratories all over the world. These have repeatedly demonstrated that one day's feeding of TALON is generally enough to kill all major rodent pest species. No other anticoagulant can achieve such consistent results.

Brodifacoum is so powerful that rodents ingesting a small proportion of their daily intake in the form of TALON will ingest a dose which is lethal, as shown below:



As shown in the above chart, for a dense rat infestation around buildings, control may be achieved faster if bait is replenished twice during the first week with weekly baiting thereafter if necessary.

Using the 'pulsed baiting technique' to save on bait and labour, total control of rodents can be achieved – even amongst warfarin-resistant populations.



Talon®

Powerful

Only a single feed required to kill all rats and mice.

Versatile

A range of baits for every situation.

Palatable

All bait formulations proven attractive to rodents.

Reliable

Reduced call-backs ensure customer satisfaction.

Efficient

Requires less bait and less labour than traditional anticoagulants.

Proven

The world's most effective rodenticide.

Protected

Contains Bitrex® to help prevent accidental human consumption.



syngenta

READ THE LABEL BEFORE USE: USE PESTICIDES SAFELY.

'TALON' contains brodifacoum. 'TALON' rodenticide is also sold as 'KLERAT' in some countries.

'KLERAT' and 'TALON' are trademarks of Syngenta Group Company © Syngenta 2003

'Bitrex' is a trademark of Macfarlan Smith Ltd.

Syngenta Crop Protection AG, Professional Products, Schwarzwaldallee 215, P.O. Box, CH-4002 Basel, Switzerland

Tel: +41 61 323 1111 Fax: +41 61 323 5608

Email: infoprof.products@syngenta.com Web: www.syngenta.com

Important: Always read and follow label instructions before buying or using these products. Syngenta and its affiliates warrant that their products conform to the chemical description set forth on the products' labels. NO OTHER WARRANTIES, WHETHER EXPRESS OR IMPLIED, INCLUDING WARRANTIES OF MERCHANTABILITY AND OF FITNESS FOR A PARTICULAR PURPOSE, SHALL APPLY TO SYNGENTA PRODUCTS. Syngenta and its affiliates neither assume nor authorize any representative or other person to assume for them any obligation or liability other than such as is expressly set forth herein. UNDER NO CIRCUMSTANCES SHALL SYNGENTA AND ITS AFFILIATES BE LIABLE FOR INCIDENTAL OR CONSEQUENTIAL DAMAGES RESULTING FROM THE USE OR HANDLING OF THEIR PRODUCTS. No statements or recommendations contained herein are to be construed as inducements to infringe any relevant patent now or hereafter in existence. ©2003 Syngenta. Syngenta Crop Protection AG, Basel, Switzerland